

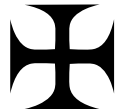
**NATIVITY
OF THE
BLESSED VIRGIN MARY**

'Proper' of the Mass

**Set to Gregorian Psalm-tones
With Organ Accompaniment**

by

Samuel F. Weber, O.S.B.



2006

Acknowledgements

The English translation of the Psalm responses, the Gospel Acclamation verses, from *The Lectionary for Mass* © 1968, 1981, 1997, ICEL ; the English translation of the Entrance and Communion Antiphons from *The Roman Missal* © 1973 ICEL, Washington, D.C. All rights reserved.

Translations of the Psalms taken from *The Book of Psalms* © 1950 and 1995 by the Confraternity of Christian Doctrine, Washington, D.C.

English tones and harmonizations by Samuel F. Weber, O.S.B.

Musical settings and compilation © 2006 Saint Meinrad Archabbey, St. Meinrad, IN 47577 U.S.A. All rights reserved.

Contact the editor :

Rev. Samuel F. Weber, O.S.B.
Box 7719
Winston-Salem, NC 27109-7719 U.S.A.
TEL 336.758.4289
EMAIL webersf@wfu.edu

ORGAN ACCOMPANIMENT

**NATIVITY
OF THE
BLESSED VIRGIN MARY**

Introit

Salve, sancta Parens.

Sedulius

Antiphon :

2. Hail, ho- ly Moth- er, * who gave birth

Musical notation for the first line of the antiphon. It consists of a treble and bass staff in G major (one sharp). The melody is in the treble staff, and the organ accompaniment is in the bass staff. The text "2. Hail, ho- ly Moth- er, * who gave birth" is written above the treble staff. There are slurs and a fermata over the word "er,".

to the King, who rules heav- en and earth

Musical notation for the second line of the antiphon. It consists of a treble and bass staff in G major. The melody continues in the treble staff, and the organ accompaniment continues in the bass staff. The text "to the King, who rules heav- en and earth" is written above the treble staff. There are slurs and a fermata over the word "earth".

for- ev- er and ev- er.

Musical notation for the third line of the antiphon. It consists of a treble and bass staff in G major. The melody concludes in the treble staff, and the organ accompaniment concludes in the bass staff. The text "for- ev- er and ev- er." is written above the treble staff. There are slurs and a fermata over the word "er."

(P. T.) Al- le- lu- ia, al- le- lu- ia.

Musical notation for the Gloria. It consists of a treble and bass staff in G major. The melody is in the treble staff, and the organ accompaniment is in the bass staff. The text "(P. T.) Al- le- lu- ia, al- le- lu- ia." is written above the treble staff. There is a triplet of eighth notes in the treble staff.

Introit

Psalm Verse

Eructavit cor meum.

Ps 44 : 2

2. My heart o- ver- flows with a good- ly theme ; *

Musical notation for the first line of the psalm verse. It consists of two staves: a treble clef staff and a bass clef staff. The key signature is two sharps (F# and C#). The melody is written in the treble clef, and the organ accompaniment is in the bass clef. The melody begins with a quarter rest, followed by a series of eighth and quarter notes. The organ accompaniment features a steady eighth-note bass line and chords in the right hand.

as I sing to the king the song that I have made.

Musical notation for the second line of the psalm verse. It consists of two staves: a treble clef staff and a bass clef staff. The key signature is two sharps (F# and C#). The melody continues from the first line, ending with a quarter rest. The organ accompaniment continues with a steady eighth-note bass line and chords in the right hand.

Nativity of the Blessed Virgin Mary

Gloria Patri :

2. Glo- ry be to the Father, and to the Son, and to the

Musical notation for the first line of the Gloria Patri. It consists of two staves: a treble clef staff and a bass clef staff. The key signature is two sharps (F# and C#), and the time signature is 4/4. The melody is written in the treble clef, and the organ accompaniment is in the bass clef. The first measure contains the lyrics '2. Glo- ry be'.

Ho- ly Spir- it. * As it was in the beginning, is

Musical notation for the second line of the Gloria Patri. It consists of two staves: a treble clef staff and a bass clef staff. The key signature is two sharps (F# and C#), and the time signature is 4/4. The melody is written in the treble clef, and the organ accompaniment is in the bass clef. The first measure contains the lyrics 'Ho- ly Spir- it. * As it was in the beginning, is'.

now, and ev- er shall be, world with-out end.

Musical notation for the third line of the Gloria Patri. It consists of two staves: a treble clef staff and a bass clef staff. The key signature is two sharps (F# and C#), and the time signature is 4/4. The melody is written in the treble clef, and the organ accompaniment is in the bass clef. The first measure contains the lyrics 'now, and ev- er shall be, world with-out end.'

A- men.

Musical notation for the final line of the Gloria Patri. It consists of two staves: a treble clef staff and a bass clef staff. The key signature is two sharps (F# and C#), and the time signature is 4/4. The melody is written in the treble clef, and the organ accompaniment is in the bass clef. The first measure contains the lyrics 'A- men.'

Nativity of the Blessed Virgin Mary

Psalm Verses : Psalm 121, Mode 2



1. I was glad when they *said to me*, *
“ Let us go up *to the Lord’s* house. ”
2. And now we *have set foot*, *
within your gates, *O Jerusalem*. (R.)
3. Jerusalem, built *as a city* *
with *compact unity*.
4. To it the *tribes go up*, *
the tribes of the Lord, (R.)
5. According to the *decree for Israel*, *
to give thanks to the name *of the Lord*. (R.)
6. In it are *set up judgement* seats, *
seats for the house of David. (R.)
7. Pray for the peace *of Jerusalem* ! *
May those who *love you prosper* !
8. May peace be *within your walls*, *
prosperity in your buildings. (R.)
9. Because of my relatives *and friends* *
I will say, “ Peace *be within* you. ”
10. Because of the house of the *Lord, our God*, *
I will pray for your good. (R.)

Introit

Metrical Psalm.

Tune : SAINT COLUMBA (C.M.)

Ps 121

PRAY that Jerusalem may have
Peace and felicity.
Let them that love thee and thy peace
Have still prosperity.

Therefore I will that peace may still
Within thy walls remain,
And ever may thy palaces
Prosperity retain.

Now, for my friends' and brethren's sake
'Peace be in thee,' I'll say,
And, for the house of God our Lord,
I'll seek thy good alway.

All glory to the Father be,
And to his only Son ;
All praise unto the Comforter,
The Godhead, Three in One. Amen.

Scottish Metrical Psalter (1650)

Nativity of the Blessed Virgin Mary

Responsorial Psalm

Gaudens gaudebo in Domino.

Isaiah 61 : 10

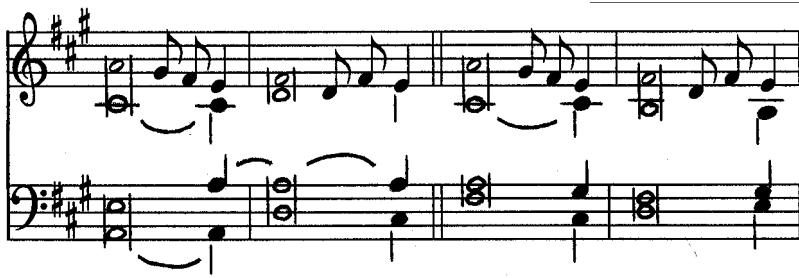
8. With de- light I re- joice in the Lord.



Psalm Tone

Organist : since there is only one verse, and then the refrain, use accompaniment B, which concludes with the final chord and leads back to the Refrain.

B



Verses

Ps 12 : 6ab. 6c

1. Though I trusted *in your mercy*, *
let my heart rejoice *in your salvation*. (Rz)
2. Let me sing *of the Lord*, *
"He has been *good to me*." (Rz)

Nativity of the Blessed Virgin Mary

Alleluia

6. Al- le- lu- ia, al- le- lu- ia.

Musical notation for Alleluia 6, consisting of a treble and bass staff. The melody is in G major (one flat) and 4/4 time. The lyrics 'Al- le- lu- ia, al- le- lu- ia.' are written below the treble staff. The music features a simple, rhythmic melody with a steady bass accompaniment.

1. Al- le- lu- ia, al- le- lu- ia, al- le- lu- ia.

Musical notation for Alleluia 1, consisting of a treble and bass staff. The melody is in G major (one flat) and 4/4 time. The lyrics 'Al- le- lu- ia, al- le- lu- ia, al- le- lu- ia.' are written below the treble staff. The music features a more complex melody with a steady bass accompaniment.

Verse

1 or 6. Bless- ed are you, ho- ly Vir- gin Mar- y,

Musical notation for the Verse, consisting of a treble and bass staff. The melody is in G major (one flat) and 4/4 time. The lyrics 'Bless- ed are you, ho- ly Vir- gin Mar- y,' are written below the treble staff. The music features a simple, rhythmic melody with a steady bass accompaniment.

de- serv- ing of all praise ; from you rose the Sun

Musical notation for the continuation of the Verse, consisting of a treble and bass staff. The melody is in G major (one flat) and 4/4 time. The lyrics 'de- serv- ing of all praise ; from you rose the Sun' are written below the treble staff. The music features a simple, rhythmic melody with a steady bass accompaniment.

of Jus- tice, Christ our God.

Musical notation for the conclusion of the Verse, consisting of a treble and bass staff. The melody is in G major (one flat) and 4/4 time. The lyrics 'of Jus- tice, Christ our God.' are written below the treble staff. The music features a simple, rhythmic melody with a steady bass accompaniment.

Nativity of the Blessed Virgin Mary

ANTIPHON

(Suitable at any time)

8. You are the glo- ry of Je- ru- sa- lem, * you

Musical notation for the first line of the antiphon. It consists of two staves: a treble clef staff and a bass clef staff. The key signature has two sharps (F# and C#). The melody is written in the treble clef, and the organ accompaniment is in the bass clef. The lyrics 'You are the glo- ry of Je- ru- sa- lem, * you' are positioned above the treble staff.

are the joy of Is- ra- el, you are the

Musical notation for the second line of the antiphon. It consists of two staves: a treble clef staff and a bass clef staff. The key signature has two sharps (F# and C#). The melody is written in the treble clef, and the organ accompaniment is in the bass clef. The lyrics 'are the joy of Is- ra- el, you are the' are positioned above the treble staff.

hon- or of our peo- ple.

Musical notation for the third line of the antiphon. It consists of two staves: a treble clef staff and a bass clef staff. The key signature has two sharps (F# and C#). The melody is written in the treble clef, and the organ accompaniment is in the bass clef. The lyrics 'hon- or of our peo- ple.' are positioned above the treble staff.

Chant melody by Columba Kelly, O.S.B. Organ accompaniment by Samuel F. Weber, O.S.B.
© 2006 Saint Meinrad Archabbey, St. Meinrad, IN 47577-1010 U.S.A.
All rights reserved. EMAIL : webersf@wfu.edu

Nativity of the Blessed Virgin Mary

OFFERTORY

1. Hail Mar- y, * full of grace, the Lord is with you; bless-ed are you a- mong wo- men, al- le- lu- ia.

Text from the *Roman Missal*, 1964. Melody by Columba Kelly, O.S.B. Harmonization by Samuel F. Weber, O.S.B.

Verse 1

1. How shall this be done since I know not man? * The Holy Spirit will come upon you and the power of the Most

High will o- ver- shad- ow you. * Bless-ed.

Verse 2

There- fore, the child to be born of you will be called ho- ly * the Son of God. *Ant.* Hail Mar- y.

Chant melodies and organ harmonies by Samuel F. Weber, O.S.B.
© 2006 Saint Meinrad Archabbey, St. Meinrad, IN 47577-1010 U.S.A.
All rights reserved. EMAIL : webersf@wfu.edu

Nativity of the Blessed Virgin Mary

Communion

8. All hon- or to you, Mar- y! * From you a- rose the sun of jus- tice, Christ our God.

Musical notation for the first line of the Communion text, featuring a treble and bass staff with a key signature of one flat and a 4/4 time signature. The melody is written in the treble clef, and the accompaniment is in the bass clef. The text is: "8. All hon- or to you, Mar- y! * From you a- rose the sun of jus- tice, Christ our God."

All peo- ple now will call me bless- ed * for he has loved the lowliness of his handmaid. * From you.

Musical notation for the second line of the Communion text, featuring a treble and bass staff with a key signature of one flat and a 4/4 time signature. The melody is written in the treble clef, and the accompaniment is in the bass clef. The text is: "All peo- ple now will call me bless- ed * for he has loved the lowliness of his handmaid. * From you."

The Al- might- y has done great things for me, * and ho- ly is his Name. *Ant.* All hon- or

Musical notation for the third line of the Communion text, featuring a treble and bass staff with a key signature of one flat and a 4/4 time signature. The melody is written in the treble clef, and the accompaniment is in the bass clef. The text is: "The Al- might- y has done great things for me, * and ho- ly is his Name. *Ant.* All hon- or"

And / Or : Verse 2 for Equal Voices (SSA or TTB)

Setting for equal voices by Carlo Rossini, adapted by Samuel F. Weber, O.S.B.

The Almighty has | done great things for me, * and ho- ly is his Name. *Ant.* All

Musical notation for Verse 2 for Equal Voices, featuring a treble and bass staff with a key signature of one flat and a 4/4 time signature. The melody is written in the treble clef, and the accompaniment is in the bass clef. The text is: "The Almighty has | done great things for me, * and ho- ly is his Name. *Ant.* All"

Chant melody, psalm tone arrangement and harmonizations by Samuel F. Weber, O.S.B.

© 2006 Saint Meinrad Archabbey, St. Meinrad, IN 47577-1010 U.S.A.

All rights reserved. EMAIL : webersf@wfu.edu