

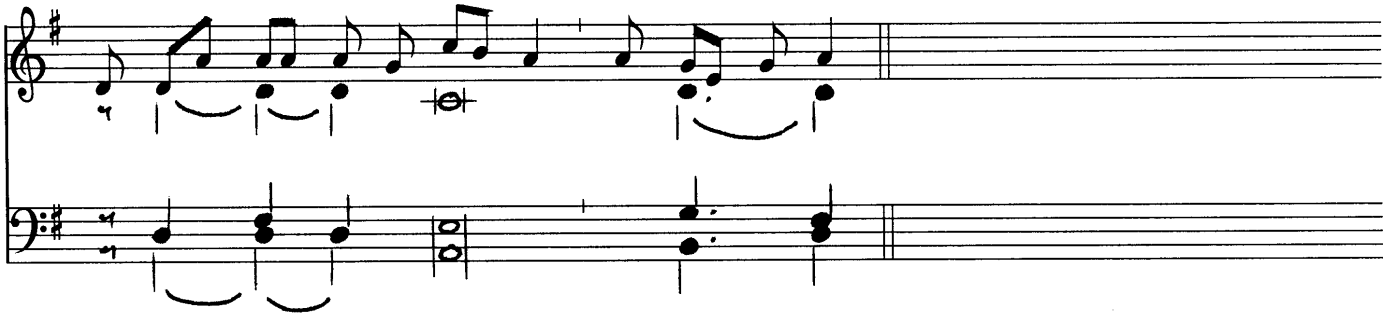
15 August. Assumption of BVM

Responsorial Psalm

Astiti regina.

Psalm 44 : 10

7. The queen stands at your right hand, ar- rayed in gold.



Psalm Tone



Verses

Ps 44 : 10. 11. 12. 16

1. Hear, O daughter, and **see** ; | *turn your ear*, *
forget your people and your | *father's house*. (R)
2. So shall the king *desire your beauty* ; *
for | he is *your lord*. (R)
3. They are borne in with *gladness and joy* ; *
they enter the palace | of *the king*. (R)

15 August. Assumption of BVM

Alleluia

5. Al- le- lu- ia. *ij.*

Verse

5. Mar- y is tak- en up to heav- en; a chor- us of an- gels

ex- ults.

15 August. Assumption of BVM

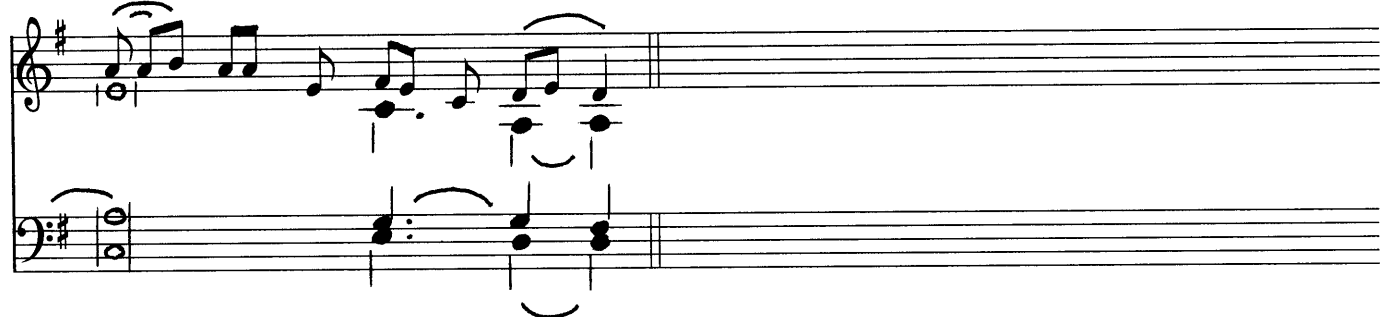
OFFERTORY

Assumpta est Maria.

7. Mar- y * has been tak- en up in- to heav- en, the an- gels are re- joic- ing :



prais- ing, they bless the Lord.



Melody by Columba Kelly, O.S.B. Harmonization by Samuel F. Weber, O.S.B.

Psalm Tone



Verses

Ps 148

1. Praise the Lord *from the heavens*, *
praise him | in *the heights*.
Praise him, *all his angels*,
praise him, | all *his host*. (R.)
2. Let them praise the name *of the Lord*, *
for he a- | lone is *exalted*.
The splendor *of his name*, *
reaches beyond | heaven *and earth*. (R.)