

THE EXALTATION OF THE HOLY CROSS

THE HOLY GOSPEL

Tonus recentior



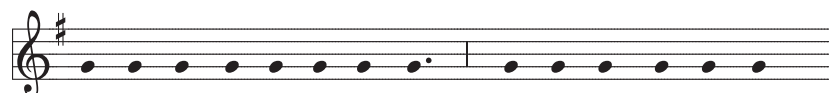
The Lord be with you. *R.* And al- so with you.



A read-ing from the ho- ly Gos- pel ac-cord-ing to John.



R. Glo- ry to you, O Lord.



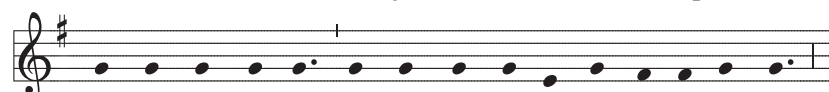
Je- sus said to Ni- co- de-mus : “ No one has gone up to



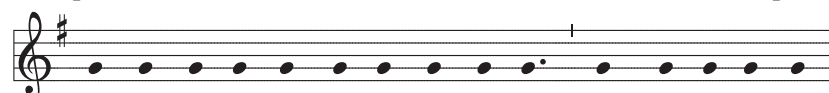
heav-en ex-cept the one who has come down from heav-en,



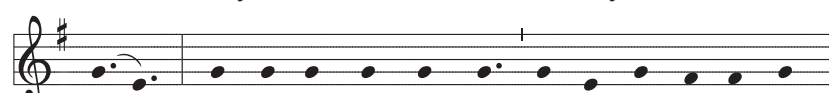
the Son of Man. And just as Mos-es lift-ed up the ser-



pent in the des-ert, so must the Son of Man be lift-ed up,



so that ev'-ry-one who believes in him may have e- ter- nal



life. ” For God so loved the world that he gave his on- ly



Son, so that ev'-ry-one who believes in him might not per-ish



but might have e- ter- nal life. For God did not send his Son



in- to the world to condemn the world, but that the world



might be saved through him.



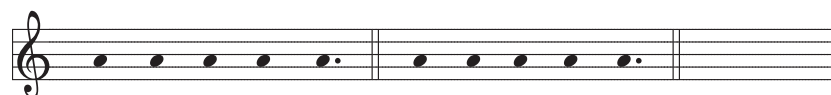
The Gos- pel of the Lord. *R.* Praise to you, Lord Je- sus Christ.

Chant settings by Fr. Samuel F. Weber, O.S.B., © 2010 Saint Meinrad Archabbey, St. Meinrad, IN 47577-1010 U.S.A., All rights reserved. Used with permission. **INSTITUTE OF SACRED MUSIC**, Archdiocese of Saint Louis, 5200 Glennon Drive, St. Louis, MO 63119-4330 weber@kenrick.edu

THE EXALTATION OF THE HOLY CROSS

THE HOLY GOSPEL

Tonus antiquior



The Lord be with you. *R.* And al- so with you.



A read- ing from the ho- ly Gos- pel ac- cord- ing to John.



R. Glo- ry to you, O Lord.



Je- sus said to Ni- co- de- mus : “ No one has gone up to



heav- en ex- cept the one who has come down from heav- en,



the Son of Man. And just as Mos- es lift- ed up the ser-



pent in the des- ert, so must the Son of Man be lift- ed up,



so that ev'-ry-one who believes in him may have e- ter- nal



life.” For God so loved the world that he gave his on- ly



Son, so that ev'-ry-one who believes in him might not per- ish



but might have e- ter- nal life. For God did not send his Son



in- to the world to con- demn the world, but that the world



might be saved through him.



The Gos- pel of the Lord. *R.* Praise to you, Lord Je- sus Christ.

Chant settings by Fr. Samuel F. Weber, O.S.B., © 2010 Saint Meinrad Archabbey, St. Meinrad, IN 47577-1010 U.S.A., All rights reserved. Used with permission. **INSTITUTE OF SACRED MUSIC**, Archdiocese of Saint Louis, 5200 Glennon Drive, St. Louis, MO 63119-4330 weber@kenrick.edu